

Beatrice L. Palmer

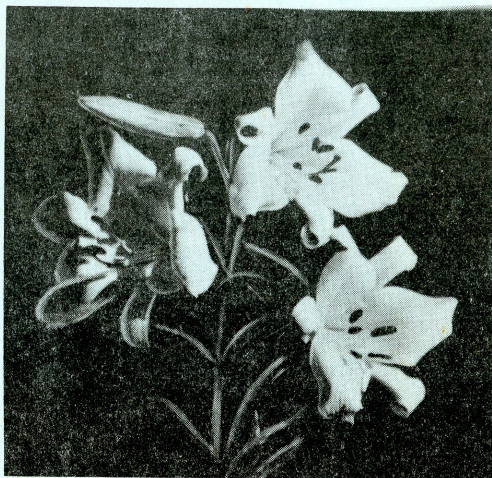
F. R. H. S.

R.M.D. No. 1, CORPSE HILL, VANCOUVER ISLAND, B.C., CANADA

Residence, Cowichan Bay Road

Phone Exchange, Duncan, B.C.

Lilies



TERMS OF SALE

Orders for lily bulbs to the value of \$25.00 and upwards will be sent carriage and packing free, to all points in Canada and U.S.A. On orders valued at less than \$25.00 please add 10% for carriage. Remittances with order unless otherwise arranged. Customers resident in B.C. please add 5% for Provincial Sales Tax.

Overseas orders should be accompanied by remittance to the value of the goods ordered, with additional amount to cover cost of postage and packing. Special care is taken in packing bulbs ordered from a distance.

QUALITY GUARANTEED

We offer stock grown in our gardens on Vancouver Island, B.C., and every care is taken that bulbs sent out shall be healthy, vigorous and free from disease. In the unusual event of any bulbs not proving true to name, we will willingly replace free of charge, but we cannot hold ourselves responsible in case of failure to grow.

We make a practice of digging bulbs directly before shipping, so that they may be as short a time as possible out of the ground, and all our lily bulbs are sent out with their roots intact. Shipments made from September 15th to November 30th, to suit customer's convenience.

Please notify at once if shipments are not received in good condition, so that proper adjustment may be made.

FALL - 1964

DESCRIPTIVE PRICE LIST

All bulbs offered are of flowering size, unless otherwise specified.
Three or more bulbs at per dozen rate.

We pay carriage on orders for \$25.00 and over, to all points in Canada and U.S.A.
On orders for less than \$25.00, please add 10% for carriage.

B.C. Customers please add 5% for Provincial Sales Tax.

Planting depths given refer to the number of inches of soil over the tops of the bulbs.

* For SEED of varieties marked * see page 6.

STANDARD SPECIES AND VARIETIES

Each Dozen

***Candidum**—The beautiful Madonna Lily. Pure white, flowering June-July, 3-4 feet tall. This lily should be ordered early as it thrives best if moved in August, before the new winter-hardy leaves start to grow. Plant shallow, with a bare inch of soil over the tops of the bulbs.....

.50 5.00

Giganteum Himalaicum—The stately Himalayan Giant Lily, growing to a height of 15 feet, with large heart-shaped leaves and long tubular blooms. Sweetly scented, white with rich maroon-purple in the throat. Must be planted very shallow, with the tips of the large bulbs on a level with the surface of the ground. Best results are obtained from planting moderate-sized bulbs, to flower the first or second year after planting.....

2.50

***Henryi**—Selected Strain. Nodding flowers of sunny orange-yellow with green central line. Very vigorous and dependable. From a group of L. Henryi seedling we have selected this strain which has larger, flatter and less reflexed flowers than the type. Also a more upright habit of growth. Height 5-8 feet. Plant 3-5 inches deep, in partial shade for best colour.

August flowering50 5.00

Henryi—Variety "Citrinum"—A rare and charming variety of this dependable lily. Up to 20 or more large, nodding blooms; cool, sparkling lemon yellow; borne on graceful arching sprays.....

3.00 30.00

***Martagon**—A vigorous, dependable garden lily, with 3-5 foot spikes carrying numerous Turk's Cap type blooms. Varying from pinkish lilac to light purple. Plant 3-4 inches deep, in full sun or part shade. June - July. **SOLD OUT FOR 1964**

Martagon Album—The White Martagon, one of the loveliest lilies in cultivation. Bearing up to 30 small waxy-white flowers on a graceful pyramidal head from 3-5 feet tall. Season and culture same as Martagon type **SOLD OUT FOR 1964**

MARTAGON—Variety "PURPLE SPIRE"—(B. L. Palmer, 1962 introduction).

A selected seedling clone with rich plum-purple flowers and slightly woolly buds. Up to 30 or more blooms, beautifully spaced on a tall, steeply spired head. Straight dark stems rise to a height of 4-6 feet. Somewhat later flowering than the type, and lasting exceptionally well even in hot weather. Culture as for L. Martagon.....

1.50 15.00

MARTAGON X HANSONI HYBRIDS

An intriguing and colorful group of early flowering lilies, similar in size, type and culture to the Martagons.

BALLERINA (Beatrice L. Palmer)—A hybrid raised in our gardens, very attractive and unusual in form for this group. The colour is chrome yellow with a few maroon dots. Blooms are medium size, numerous and bell shaped, and so arranged that they appear to be dancing around the pagoda-like pyramidal head. Height 4-5 feet. Flowering period late June. Culture as for L. Martagon.....

5.00 50.00

***Mrs. R. O. Backhouse** — one of the finest of the famous Backhouse Hybrids. Vigorous and free-flowering. Indian yellow, lightly spotted purple. 3-5 feet tall June - July flowering.....

3.00 30.00

PRIMADONNA—(Beatrice L. Palmer, 1962 introduction). A sister seedling of L. Ballerina. Buds and newly opened flowers are rose pink, with inside centre dotted rose pink on white, gradually blending in sun to a uniform soft creamy pink. 20-30 gently reflexed flowers, almost all open at once, make a full columnar head of bloom. 2½ to 3 feet tall, very vigorous and free flowering.....

4.00

NORTH AMERICAN PACIFIC COAST SPECIES AND HYBRIDS

Each Dozen

- *Pardalinum Giganteum**—Selected strain. A very robust and hardy lily, believed to be a natural hybrid of *Pardalinum* and *Humboldtii*. Established bulbs will throw stems 7-9 feet high, carrying wonderful heads of showy recurved flowers. Prevailing colour is rich vermilion red shading to orange-red at the tips, with a deep golden centre, thickly covered with purple-black spots. Flowers mid-July. Plant 3 inches deep. Prefers a moist soil during Summer and partial shade50 5.00
- *Vollmeri**—A charmingly dainty and colourful small-flowered turkscap species found in Northern California and Southern Oregon. Slender wiry stems, 2½ to 3 feet tall, with from 1 to 15 clear, sparkling orange-red flowers, flecked with red-purple to black spots. Plant 2-3 inches deep where it will have a cool, moist root-run in summer and adequate drainage. Suitable for pool-side or stream bank. July flowering 2.00 20.00

BELLINGHAM HYBRIDS

The late Dr. David Griffiths, of the U.S. Department of Agriculture, devoted considerable time and attention to Lilies, and has left us some very fine hybrids resulting from crosses between various American species. Notable amongst these are the following *Humboldtii*, *Pardalinum* and *Parryi* hybrids. Blooming in late June to August, these lilies are ideal for the open woodland or stream-bank, preferring partial shade, lime-free soil rich in humus, and a cool, moist root-run with good drainage. Plant 3-5 inches deep.

- *Cyrus Gates—Humboldtii Mag. X Pardalinum**—A very vigorous grower with large, broad petaled, reflexed flowers of rich orange-yellow, spotted purple at base and reddish-bronze towards tips.
Height 5-7 feet 1.50 15.00
- *Star of Oregon—Humboldtii X Pardalinum**—Five to 7 feet tall and very vigorous. Cadum orange with black spots enlarged with red zones..... 1.50 15.00

- *JUAN DE FUCA—Pardalinum Gig. X Parryi**—Of the same origin as the **Bellingham Hybrids**, we are pleased to offer this highly recommended and very desirable lily. Strongly erect 5-7 foot stems bear up to 30 or more medium-sized reflexed blooms, on a tall pyramidal head. Light vermilion red with a golden centre sprinkled with mahogany-red dots. Free flowering and fragrant. Culture as for Bellingham Hybrids..... 3.00 30.00

QUALITY HYBRIDS

PRESTON HYBRIDS

We are indebted to Miss Isobella Preston, presently of Georgetown, Ontario, and formerly Expert in Ornamental Horticulture at the Central Experimental Farm, Ottawa, for several of the finest hybrid lilies in cultivation. All are excellent garden lilies, vigorous and hardy, with strong, upright stems, luxuriant foliage and large brilliantly colored flowers.

- Addington**—A fine clear yellow, dotted brown, with large, firm-textured, cup-shaped blooms on a candelabra head. 2-2½ feet tall.
Early July flowering 2.00
- *Corsair**—An attractive hybrid with medium-sized vase-shaped flowers, facing upwards. 12-15 blooms, well arranged on a stiff straight stem, 2-3 feet tall. The colour is unusual and may be described as soft apricot yellow flushed with red 2.00 20.00

LARGE TRUMPET FLOWERED HYBRIDS

- *Priniceps—Seedlings of "Geo. C. Creelman"**—Handsome trumpet lilies, varying in blooming season from the beginning of July to the middle of August. 4-6 feet tall. Plant 3-5 inches deep..... 1.00 10.00
- Priniceps—Seedling Variety "Trumpeter"**—Selected for its moderate height (3-4 ft.) and very large blooms of waxy texture. Buds are rosy brown and open pure white inside, with soft yellow in the throat and dark brown anthers 3.00 30.00

QUALITY HYBRIDS

RECENT INTRODUCTIONS IN RED, ORANGE AND YELLOW

Each Dozen

ALGONQUIN—(Dr. E. F. Palmer, 1962 introduction). A richly glowing very dark red, derived from L. Sultan and L. Redbird. The whole plant is very robust, 3-4 feet tall, with a stout, almost black stem and luxuriant dark green foliage. Blooms are 5-6 inches across, half-reflexed and face out; 15 or more to a spike with 5-6 open at once and lasting well over a long period. Increases readily from stem bulbs and also produced some bulbils. Plant 3-5 inches deep in a sunny situation. Mid-July flowering..... 4.00 40.00

***Davidil**—Variety "Maxwill"—A very fine lily raised by Dr. F. L. Skinner, Dropmore, Manitoba. Stiff, straight stems, with luxurious foliage, rise to a height of 4-5 feet and carry up to 30 large, nodding blooms; brilliant orange-red in colour and of a waxy substance.
Plant 3-5 inches deep, in full sun. July-August flowering..... .60 6.00

King William—(Dr. E. F. Palmer). A tall, vigorous and colorful introduction. Bright, lively orange with up to 40 blooms, 4½" diameter, out-facing and well spaced on an unusually strong, robust spike. Five to 6 feet tall. Secondary buds help to give a full head of bloom lasting well throughout July. Plant 3-4 inches deep, in a sunny situation..... 2.50 25.00

MOHAWK—(Dr. E. F. Palmer 1963 introduction) Sultan X Redbird—Blooms are clear lively dark red, half nodding and reflexed, set off by dark green foliage. Vigorous 3-4 ft. stems bear graceful racemes of up to 40 buds, with 5-6 open at once. Propagates readily from stem bulbs. (No bulbils).
Early July flowering. Culture as for Algonquin..... 4.00 40.00

Redbird—(Croceum X Elegans Mahogany) X Tigrinum. Originated by Dr. E. F. Palmer, this is an entirely new "break" in lily hybrids. From full sized bulbs the dark stems rise strongly erect to a height of five feet, bearing an abundance of glossy leaves, and up to 16 blooms well arranged in a graceful raceme. The blooms are 4½ inches in diameter, half reflexed, and face outwards. Colour is a medium deep red with a touch of tigrinum rose, and spotted darker. A moderate number of bulbils are formed in the axils of the leaves. July flowering, 4-5 open at once, and continuous bloom for three weeks.
Plant 3-4 inches deep in full sun..... 2.00 20.00

Red Fortune—(Dr. E. F. Palmer). A vibrantly glowing early deep red, resulting from a cross of L. x Brenda Watts and L. Umbellatum 'Vermilion Brilliant'. The large, up-facing flowers are borne on vigorous 2½ to 3 ft. stems, with dark green foliage. Opening in mid-June they last well into July.
Plant 3 inches deep, in sunny situation..... 3.00 30.00

Samarkand—(Dr. R. C. Palmer)—A richly burnished deep red, resulting from a cross between Skyrocket and Sultan. Blooms are nodding, Turk's cap type, borne on strongly erect stems 4-4½ feet tall. Secondary buds on many of the bloom pedicels increase the number of blooms to 40 or more on mature plants, and greatly extend the blooming period. Flowering in July this lily holds its rich, glowing color well, even
in full sun. Plant 3-4 inches deep..... SOLD OUT FOR 1964

***Viking**—Another introduction from Dr. E. F. Palmer is this Willmottiae X Trigrinum hybrid. More vigorous and taller than either parent, with nodding, Turk's-cap blooms intermediate between the two in size, color and season. 6-7 foot stems carry up to 36 or more blooms on a long, graceful raceme, and secondary bud prolong the flowering season from early July for at least three weeks. Plant 3-4 inches deep, in sunny situation..... 1.50 15.00

AURELIAN HYBRIDS

FEATURING PALMER-VINELAND ORIGINATIONS

The discovery, a few years ago, that the Turk's Cap type species lily, **L. Henryi**, would cross-pollenize with various of the large trumpet lilies, opened the way to a wide range of beautiful new colors, types and forms. All are healthy, hardy and exceptionally easy to grow. We are pleased to be able to offer our discriminating customers some of the finest selections to date in this group of July-August flowering hybrids. Culture as for **L. Henryi**. Each Dozen

- * **Henryi X Aurelianense, Mixed Hybrids**—(Dr. E. F. Palmer)—A fascinating group of late July and August flowering hybrids with open, flaring and softly recurved blooms, borne on tall, gracefully branching spikes. Their soft pastel colours include lovely blendings of apricot, cream, lemon, peach and orange, with clear green nectar grooves and yellow, orange or brown anthers. Of easiest culture and with a delicate spicy fragrance, these lilies are equally desirable for the garden and for cutting. 2.50 25.00
- * **Greatheart**—(Beatrice L. Palmer, 1959 introduction)—An arrestingly beautiful new color blend in the tall growing, late July flowering lilies. Vigorous, strongly erect stems clothed in glossy, dark green foliage, rise to a height of 6-7 feet, with wide pyramidal heads bearing up to 30 medium size, wide open, flaring type blooms. The glowing flame colored centre "heart" shades to deep cream at the gently recurved tips, with vivid green nectar grooves and orange-brown stamens. Secondary buds give a full head of bloom over a long period 5.00 50.00
- Regina**—(Dr. E. F. Palmer, 1959)—A striking new hybrid which won the coveted Griffiths Cup for the best seedling lily exhibited at the N.A.L.S. Shows at Ithaca in 1957 and again at Toronto in 1958. Very large flowers, intermediate in shape between trumpet and flare. The color is pure, unspotted yellow, with contrasting reddish brown anthers. Six to 7 feet tall, strongly erect and very vigorous. Flowering season mid-July to early August. 7.50
- Silver Prince**—(Dr. E. F. Palmer, 1958)—A late flowering hybrid from Dr. Palmer's noted Aurelian strain. The flowers are recurved, creamy white shading to light tangerine at centre. Stems are vigorous and erect, rising to 6 feet, with up to 30 blooms and secondary buds which prolong the flowering season into late August 5.00
- Starlite**—(Dr. E. F. Palmer, 1960)—Another lovely member of the Sundance-Moonbeam family. The flowers are large, bowl shaped, carried on stems from 5-6 feet tall. Colour is creamy yellow, deepening to a warm apricot centre, with contrasting mahogany brown anthers. Flowering time late July to early August 5.00 50.00
- T. A. Havemeyer**—A very beautiful August-September flowering hybrid of **L. Henryi** x **L. Sulphureum**. Flowers are 5-6 inches across, wide open and slightly reflexed; and the colour is a clear apricot-buff shading to cream at the tips. Graceful 4-5 foot stems bear up to 15 or more well-spaced blooms on a branching pyramidal head 3.00 30.00
- T. A. Havemeyer X Aurelianense—Mixed Hybrids**—(Beatrice L. Palmer)—Similar in growth, size and form to **T. A. Havemeyer**, in lovely pastel shades of apricot, buff, lemon, cream and peach 4.00 40.00

VINELAND GOLDEN AURELIANS—(Dr. E. F. Palmer, 1962 introduction)—

A gloriously exciting strain developed from many generations of breeding using **Regale**, **Sargentiae**, **Sulphureum** and **Henryi**. The later generations have been selected for trueness to deep yellow colour when grown from seed. The rich yellow blooms are semi-trumpets with rolled and fluted petals. From 12 to 20 blooms on strong, straight stems which are 4-6 feet tall and require no staking. There will be mild variations from plant to plant, in depth of colour, flower formation, height and plant habit, as this is a seed-produced strain, not a clone. 4.00 40.00

*** LILY SEEDS**

We can supply 1964 crop seed of all the lilies quoted herein that are marked with an *. All seed is collected from selected plants which have been hand pollenized to insure the resultant seedling being true to name. It will be understood that seedlings grown from seed of any hybrid lily will not necessarily be the same as the parent, but will usually vary considerably.

Packets of seed 25c each. Prices of larger quantities on request.

We pay the postage on seed sent to any part of the world.

ORDER FORM

Beatrice L. Palmer

R.M.D. No. 1, Cobble Hill

Lilies Vancouver Island, B.C., Canada

Date.....196.....

Name.....

Address.....

When Ship.....By Mail or Express.....

</
